

Tropical Heritage Park Passport Program

Activity Book

To get the main patch, Girl Scouts must participate in a council-wide program at any of the 5 Miami-Dade County Parks' Nature Centers. To earn a park rocker patch:

Daisies must complete 3 to 5 activities*

Brownies must complete 5 to 7*

Juniors must complete 7 to 10*

Cadettes/Seniors/Ambassadors must complete 10 to 15*

** In order to earn the rockers, **at least two** of the activities completed must be site-specific for each park.*

You may want to bring a notebook or journal with you to record your observations and drawings.



Beauty of Nature

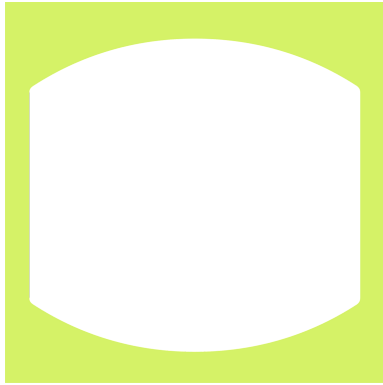
There are many spectacular views at this park.
Draw a picture of your favorite view!



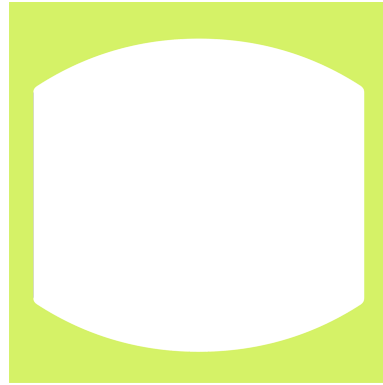
Identification

Seek is a free app to download on most smart devices. California Academy of Sciences and National Geographic developed this program for kids like you who are curious about the natural world around you. It allows you to record your flora and fauna observations as you explore this park.

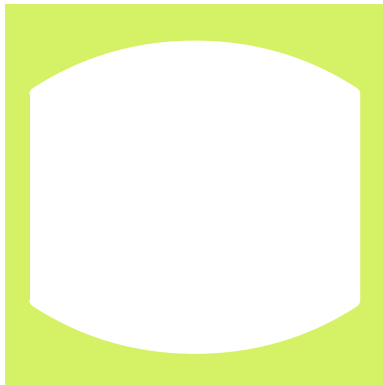
As you observe, the app identifies what you photograph. Check off all the ones below you can find here! Below write some facts about the coolest find of the day.



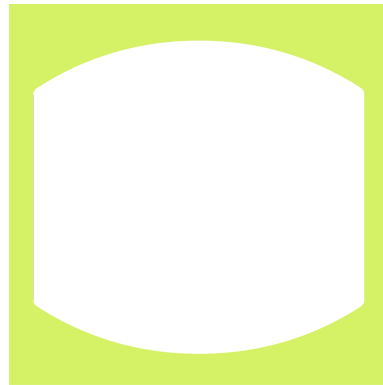
An insect



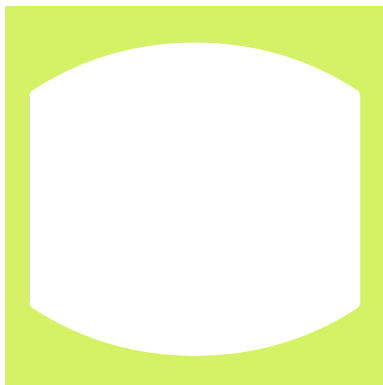
A land animal



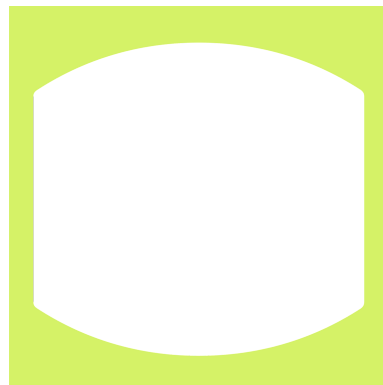
A tree



A flower



A reptile



An aquatic animal

A Mouse House

Habitats are home for wild animals. Have you ever seen a beehive? A bird nest? A gopher tortoise burrow? All of these are homes those animals live in, but none look quite like the homes we live in as humans. Use this page or your journal to draw a blueprint of shelter for an animal that lives around here. Once you are done planning, build a prototype!



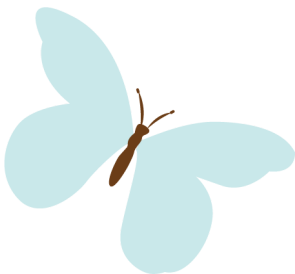
Nature Art

Andy Goldworthy is a famous artist who does sculpture. He works with only natural materials like sticks, ice, rocks, and leaves. These unique designs are made specifically to be only temporary. Find a way to make a sculpture out of only natural materials in the park. Remember to use only materials you find on the ground!



Soundscape

Pause on the trail for a moment. Close your eyes and listen closely. Imagine you are the X on this paper. Draw or write the sounds you hear in relation to you on this sheet. For example, if you hear a bird behind you draw a bird on the bottom of the page. If you hear a frog croak to the left of you draw a frog on the left side of your sheet.



Nature Journaling

Phenology (pronounced fen-ah-low-gee) is the study of natural cycles and seasonal natural phenomena. Many naturalists study this through nature journaling. Start your nature journal today by completing the activities in the boxes. Don't worry about identifying anything right in the moment, with a caregivers help you can identify things later with a field guide, park staff, or on iNaturalist based on your awesome drawing and notes in your nature journal.

Date:
Location:
Time of day:
Time of sunrise:
Time of sunset:
Moon phase:
Weather:
Wind speed:
Any additional notes:

Draw what you see on the ground
in front of you.

Draw what you see at approximately
waist height.

Draw what you see in the canopy
(tops of the trees).

Invasives Watch

Find a botanist (a plant expert) on the staff at the park and do an informal interview with them. Try to see if you can get the answers to these questions during your interview:

1. What is an invasive plant or animal?
2. Are they good or bad? Why?
3. How can I learn to ID these plants or animals?
4. What can a Girl Scout do to help?
5. If you could pass on one piece of advice to Girl Scouts out there, what would it be?

Remember to say thank you at the end of the interview!

Nature Points

Wearing gloves, pick up trash you find along your hike. For each piece of trash, you pick up you get a point. Compete with a friend or in your troop to see who can pick up the most trash by the end of your hike. If you see something dangerous, ask an adult for help.

The Stalking Game

In this game, each participant needs to find a stick. There is one person in the middle that is blindfolded. The sticks are placed on the ground around that person. Everyone else, the stalkers, disperses into the woods, but not very far. Each “stalker” tries to walk as quietly as they can to the blindfolded person. They try to grab a stick and walk silently back. If the blindfolded person hears a noise they clap, which signals to everyone walking to freeze and the blindfolded person points in the direction that they heard the noise. If they are pointing to someone, that person must go back to their starting point. If that person has a stick, they must return it to the blindfolded person. When everyone gets a stick, the game is over.



Camouflage

This game is very simple, you need no supplies, just bodies.

One person has the "Camouflage", this is kind of like being "it". The person with Camouflage calls out "CAMOUFLAGE!!!!" so everyone can hear it.

Once "it" calls camouflage, that person closes eyes, and counts to ten. From this point on they cannot move their feet.

Everyone else scatters and has 10 seconds to find a suitable hiding place. The ideal hiding place is one where the hider can see the "it" but is hiding from that person.

Once the one who is "it" has finished counting, they still are unable to move their feet, and they must look for the people hiding. During this time they may twist at the waist, but not move their feet. They will call out people who they see and their hiding spots.

Then, there is a second round of counting to ten, following the same steps but rather than starting from the same starting spot, each person moves a little closer to the counter and hides in a new spot. "It" looks around and tries to find people again. Then there is one last round.

Once a set amount of time is up, the one who is "it" calls out "Show yourselves" those who are left undiscovered come running out and the first one to tag the person who is it wins

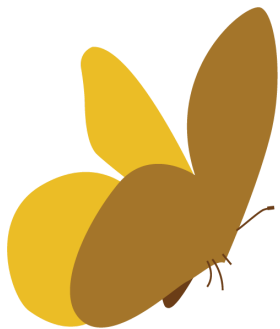


iSpy

As you are hiking, there are many things to see on the trail. One way to focus in is by playing iSpy.

One person starts by saying, “I spy with my little eye something _____” and gives a clue about something along the trail. For example, if you are looking at a leaf, maybe say, “I spy with my little eye something green.”

The group can then take turns guessing what you see. Each person in the group can a take turn.



Leave No Trace (LNT)

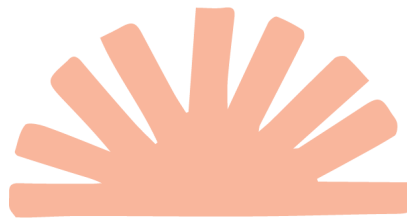
There are seven principles for LNT. These principles help keep our parks safe, healthy, and sustainable for everyone. Draw or write an example of how you practiced any of these principles during your visit to the park.

- Think and plan ahead. Make sure you tell someone your plans so if something goes wrong, they know when and where to look for you.
- Walk and camp on durable surfaces. This helps prevent erosion and compaction of valuable soil plants need to survive.
- Dispose of waste properly. If there are garbage cans in the park, be sure to use those instead of littering. When we litter animals can get very hurt.
- Keep campfires safe. Be sure you have water available; check the area before lighting the fire; keep the fire at an appropriate size in a designated fire ring; get a fire permit if necessary; never leave the fire unattended.
- Respect wildlife.
- Leave what you find so others can find what you leave. While you may find a really cool rock, shell, or flower that you want to show your friends at school or camp, if everyone starts taking things out of the park, suddenly there will be none left!
- Respect other patrons of the park.

Being Kind to the Earth

Miami-Dade parks are nestled in the middle of a bustling city. Circle some actions you might take at home to help out natural spaces like this even after you earn this badge.

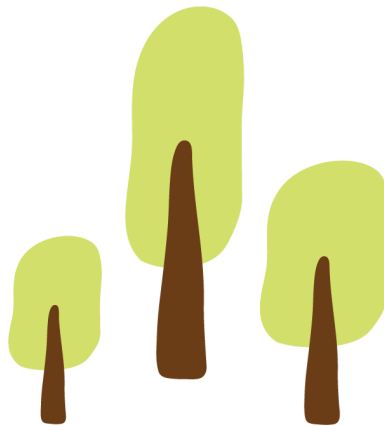
- Turning off lights and electronics when not in use
- Think global, shop local
- Use less water
- Ditch paper or plastic, bring a canvas bag for grocery shopping
- Use less water
- Use nontoxic cleaning supplies
- Cut down on single use materials when possible
- Start a compost
- Plant natives in your yard to cut down on watering
- Plant a tree
- Collect rainwater for watering your plants
- Use soy based ink if you need to print
- Using the 5 R's: Reduce, Reuse, Recycle, Refuse, Repurpose
- Picking up litter
- Walk more, drive less
- Take public transit
- Upgrading appliances to energy efficient models



Help Natural Places

Natural places are preserved for future generations to be able to enjoy like you are right now.

List 3 to 5 ways you can help preserve your favorite local park.



Tropical Heritage Park Passport Program **Park Activities**

A.D. Barnes Park

Arch Creek Park Museum and Nature Center

Castellow Hammock Preserve and Nature Center

Crandon Park and Nature Center

Bill Sadowski Park & Nature Center



A.D. Barnes Park Activities

3401 SW 72nd Ave, Miami, FL 33155

Pine Rockland

This unique ecosystem has been reduced to less than 2% of its original range. These areas have limestone bedrock with shallow topsoil and is a very dry environment comparable to the surrounding areas of south Florida. Trees in this ecosystem is well adapted for fire some features include:

- Thick bark
- Branches that are high up towards the top of the tree
- Pine seeds sprout shortly after the fire when more sunlight can reach the forest floor

Some of these fires start naturally from sources such as lightning strikes, while others are started by artificially by rangers. Make a list of these features you find as you hike around.

Citizen Science

Go into the nature center and find a naturalist. There are several different citizen science options offered at the nature centers. Gather information about which is the most interesting to you and then go out there and do it! Take notes on this page or in your journal if helpful.

Alligator Alley

Take a walk along the water. As you walk keep your eyes out for any alligators or signs of alligators. Make a drawing of what you find!

Arch Creek Park Museum & Nature Center Activities

1855 NE 135th St, North Miami, FL 33181

Find the sign that looks like this one in the park.
Read it and answer the questions below.



What type of rock is the bridge made out of?

What three major wars are important to this bridge's history
and when did they occur?

A. _____

B. _____

C. _____

What Native American Nation called Arch Creek their home?

When did the post office open?

Arch Creek Park Museum & Nature Center Activities

1855 NE 135th St, North Miami, FL 33181

Archaeology

An archaeologist is a person who finds artifacts left from old human civilizations. Often, they go on expeditions where they do digs where they meticulously go down through the layers of soil to make new discoveries about what life was like before current times. In the nature center at Arch Creek there are some examples of what archaeologists have found in the local area.

Do you think human civilizations in the area have changed since the use of these tools or stayed the same? Do you think life has gotten easier or harder for humans over time? Why or why not?

Paleontologists

While often confused with archaeologists, paleontologists deal with a different kind of history. These researchers look at time before the Holocene Epoch (current time) —Many times, they are looking at fossils and other non-human life. In the nature center at Arch Creek there are some skulls, teeth, bones, and other evidence of prehistoric life. Find your favorite item and draw what you think it looked like when it roamed the earth. Do you think it had fur or feathers? Do you think it ate meat or plants? Do you think it ran fast or moved slow?

Arch Creek Park Museum & Nature Center Activities

1855 NE 135th St, North Miami, FL 33181

Arch Creek Bridge Restoration

We know the original Arch Creek bridge suspiciously collapsed in 1973 and was rebuilt shortly after. Imagine you are one of the engineers working on rebuilding this historic landmark and draw a rendition of how you would rebuild the bridge.

Castellow Hammock Preserve & Nature Center Activities

22301 SW 162nd Ave, Miami, FL 33170

Homesteading

Back in the early 1900s this property had been used as a homesteaded property by a citrus farmer named James S. Castellow. Homesteaders like to be completely self-sufficient by doing things like making their own clothing and growing their own food.

Imagine you are a homesteader here in Castellow. Draw a diagram of a garden that would produce enough food to feed the people that are homesteading with you. Be sure to include the names of the vegetables and fruits you would include in the garden.

Castellow Hammock Preserve & Nature Center Activities

22301 SW 162nd Ave, Miami, FL 33170

Campfire Songs

There's a campfire ring at this nature center. Without actually starting a fire, have your troop leader record you and your troop singing a couple of your favorite campfire songs!

Hummingbird and Butterfly Garden

Hummingbirds and butterflies are incredible animals! They are not only beautiful, they're also extremely ecologically important. Many of these critters are considered pollinators - organisms that help keep our flowers beautiful and help make some delicious fruits. Draw your favorite hummingbird or butterfly.

Castellow Hammock Preserve & Nature Center Activities

22301 SW 162nd Ave, Miami, FL 33170

Birding

Walk along the birding trail and keep a record of how many different types of birds you can see or hear.

Nature Center

Inside the nature center are a few displays. Which of the items in the display case are the most interesting to you?
What did you learn about it?

Crandon Park & Nature Center

Activities

6747 Crandon Blvd, Key Biscayne, FL 33149

Trying Out New Things

There are many different activities to do at Crandon like golf, naturalist led hikes, tennis, swimming, or kiteboarding.

Try one new activity you've never done before and write or draw about that experience and what you learned.

Crandon Park & Nature Center

Activities

6747 Crandon Blvd, Key Biscayne, FL 33149

Marjory Stoneman Douglas Biscayne Nature Center

This nature center is named after Marjory Stoneman Douglas who was a staunch supporter of conservation of southern Florida—particularly the Everglades. She was also a big supporter of the women’s suffrage and civil rights movement. Take a moment to reflect and research about an issue that is important to you. Write a draft of a letter about this issue to persuade your local representatives to make real tangible change about this issue. This could be a change to make legislature more equitable, it could be designating more green spaces in your neighborhood, it could be to provide features that make your community safer for kids or it could be something totally different. Here's template to help you form your letter.

Dear *(name of the person you’re writing to – be sure to use the proper title like Mr., Ms. Congressperson, etc)*,

My name is *(your name)* and I am a Girl Scout. Recently, I learned about Marjory Stoneman Douglas and the work she did advocating for women’s, civil, and environmental rights. She made a real change here in Southern Florida.

I am writing in regards to *(your issue or concern)*, an issue that deeply affects our community in these three ways:

- 1.
- 2.
- 3.

Therefore, I propose this solution, *(describe your solution)* but, I need your help. If you could *(describe what you would like this person to do)*, it would mean a lot to resolving this issue.

Thank you for your time and consideration. I look forward to future discussions with you in the near future.

Sincerely,
(Your Name)

Crandon Park & Nature Center

Activities

6747 Crandon Blvd, Key Biscayne, FL 33149

Research

The Bear Cut Preserve is considered an Environmental Research Area. Ask a naturalist to give you a tour of the preserve when they are available. While you wait, think of a research topic.

1. What common plant or animal would you like study?
2. Make predictions about your study specimen.
 - In what certain areas do you expect to see it?
 - What times of day do you expect to see it active
 - What behaviors do you expect to see?
3. Record your observations. These can be drawings of specimen, graphs of times awake, or behaviors seen.
4. Draw conclusions based on your results. Were your predictions, right? Were they wrong? Why is that important for future scientists to know?

Crandon Park & Nature Center

Activities

6747 Crandon Blvd, Key Biscayne, FL 33149

Coast of Florida

The coast of Florida is made primarily of limestone. These jagged edged rocks have been known to cause shipwrecks as they can be hard to see and hard to navigate. Imagine a pirate shipwreck happened here, leaving all sorts of treasure. What do you think you would find? How could you navigate back to your sunken treasure from important places in your life (i.e. your school, your library, your home)?

Draw some of your treasure and a map below.

Bill Sadowski Park & Nature Center Activities

17555 SW 79th Ave, Palmetto Bay, FL 33157

Nature Center

You'll find a few displays inside the nature center. Which of the displays is the most interesting to you? What did you learn about it? Draw a picture of it!

Observe Animal Behaviors

A common thing for volunteers to do at nature centers, zoos, and aquariums is to record behaviors of animals. This serves several functions, including answering scientific questions and helping keep those animals healthy. Pick one of the animals in the nature center and observe its behaviors. Draw or write what you see below or in your journal.

Bill Sadowski Park & Nature Center Activities

17555 SW 79th Ave, Palmetto Bay, FL 33157

A Girl Scout Gold Award Project

A Girl Scout did her Girl Scout Gold Award project at this park. Explore the nature center and the area around it and find out what she did.

Describe the different parts of her project.

The Night Sky

A group of astronomers sometimes set up telescopes at this park. Contact the park to see when they're going to be there and go visit with them to learn about the night sky. They'll even let you look through their telescopes! Describe or draw what you saw.